

LeaderShape Online Culture Shaper

Improves organisational performance by identifying behavioural shifts to build a Performance-Enhancing Culture

What is LOCS®?

The LOCS® survey identifies both the actual and ideal culture for your organisation and the gap analysis created provides a practical blueprint for change. Through a facilitated process, the organisational change agents create a roadmap and action plan to shift climate and culture.

Developing the ideal culture of an organisation is worth the effort

- ✔ Culture is the prime internal influencer on performance, get it right and profitability follows
- ✔ Key in retaining talented people
- ✔ Fosters an environment where innovation, initiative and adaptability flow
- ✔ Changes 'this is how we do things' to 'this is how we do and improve things'
- ✔ Creates engagement and enjoyment so colleagues apply more discretionary effort
- ✔ Neuroscience shows people work at their most effective when they are happy

How Does LOCS® work?

LOCS® provides a precise, defined plan for culture change, tailored to the context of your organisation whatever the sector. The survey process ensures a rounded view from a cross-section of people in the organisation, focusing on the type of behaviours that are successful and identifies those that need changing to create a performance enhancing culture.

LOCS® uses best practice in an online format by identifying and then comparing the observed behaviours and related leadership styles to those which will create the ideal organisational climate and culture. The report is provided to the members of the leadership change team in readiness for a facilitated workshop. The workshop aligns the team behind a desired culture profile and from that identifies both the most important leadership styles and the key behavioural shifts that will deliver once implemented.

Key Features of LOCS®

- ✔ Provides a sense-making framework to describe organisational culture using four domains of Power, Structure, Achievement and Support.



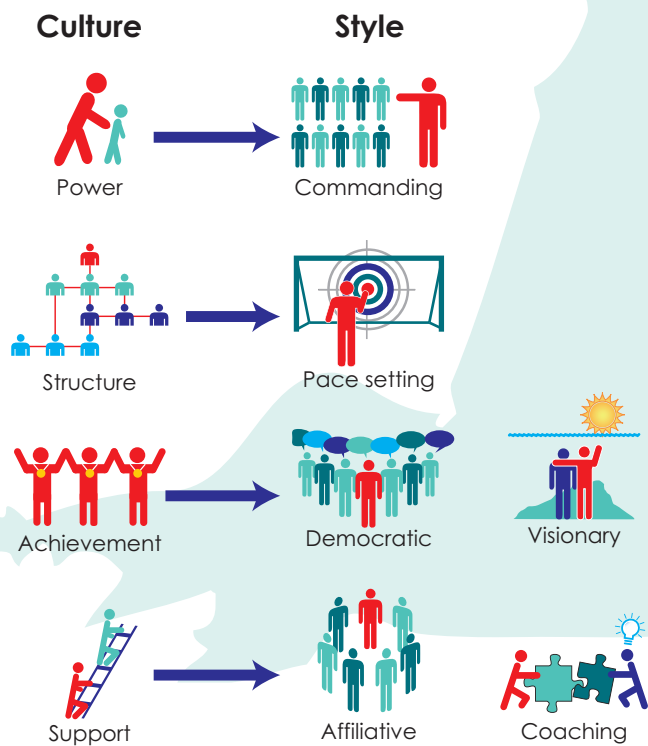


Key Features of LOCS® (continued)

- Uniquely correlates leadership styles with cultural impact, identifying those one or two that need to be developed across the organisation to promote the desired profile.
- LOCS® is an adaptation of proven models of leadership styles¹ culture types² and performance enhancing cultures³ together with LeaderShape's research and experience since 2003.

- It places an objective focus on the actual versus ideal behaviours within the organisation(s), making this tool invaluable when looking at cultural integration of merger partners or acquisition targets.
- Not reliant on standard 'norms' across organisations, LOCS® is contextual to any organisation in any geography.
- Provides a specific action plan for immediate and future development of the desired culture
- An on-line tool that is easy to set up, manage and deliver
- Can look at organisations from different perspectives e.g. management level, departmental function, geography

Relationship: Culture Parameters vs Leadership Styles



Benefits for Leaders

- Clear and contextual information creates a positive pathway for commitment to change
- Identifies practical ways to develop new behaviours and flex leadership styles – to establish the desired climate and culture of the organisation.
- Increases confidence, strengths and team relationships, and improves engagement





Benefits for your organisation

- ✔ Provides the tools to improve the bottom line through a Performance-Enhancing Culture
- ✔ Opens up communications, involvement and collaboration, and awareness grows in boards, teams and groups
- ✔ Delivers a return on investment

When to use LOCS®

- ✔ When you want to determine the ideal culture for your organisation to improve performance
- ✔ When you want to align an organisation behind one ideal culture
- ✔ When you are considering a merger or acquisition and want to see how aligned the organisations are and how they would perform at their best

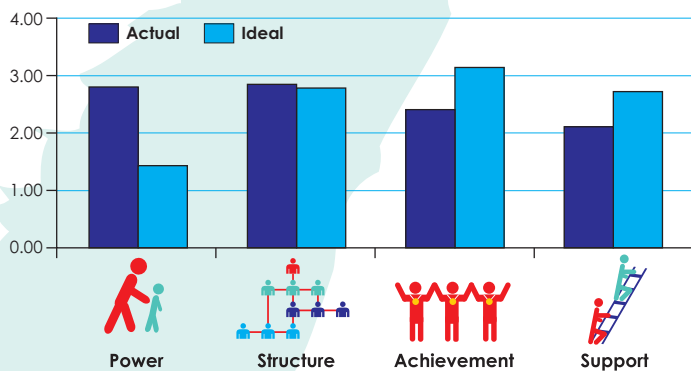
What information do I get in my report?

- ✔ Actual vs ideal culture across organisation
- ✔ Actual vs ideal by organisational level and grouping by parameter
- ✔ Behaviours to give priority to 'how do we make these statements come true'?

- ✔ Behaviours to give priority to 'how do we reduce the occurrence of these'?

Actual vs Ideal Culture across organisation

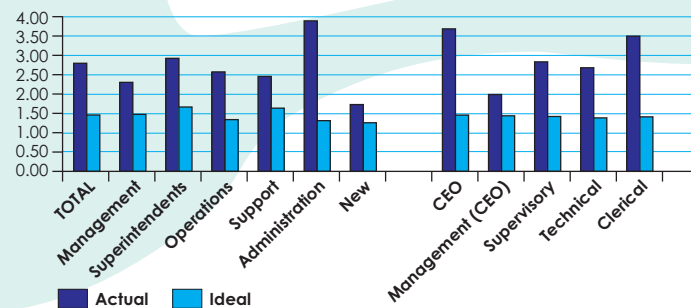
Summary of Total Raters



This illustrates how each parameter needs to shift to create the ideal culture.

Actual vs Ideal by organisational level and grouping by Parameter (Power example)

POWER Parameter



We provide this information for all 4 culture parameters, by function or department.

Biggest +VE Difference					
How do we make these statements come true?					
Question Group	Question Description	Actual	Ideal	Difference	Parameter
Different work groups:	Co-operative for common goals and cross boundaries to achieve results	2.97	4.55	1.58	Achievement
To survive in the organisation, a recruit must:	Co-operate, build relationships and be a good team member	1.94	3.29	1.35	Support
Solutions come about through:	Discussion and involvement to achieve consensus	1.90	3.19	1.29	Support
Employees are treated as:	Members of a supportive family	1.97	3.19	1.23	Support
Conflicts are usually solved by:	An approach that protects individuals and relationships	1.90	3.10	1.19	Support
Different work groups:	Are very friendly and responsive to requests for help	2.87	4.03	1.16	Support
Employees are treated as:	Colleagues committed to common achievement	2.81	3.97	1.16	Achievement
Faced with procedures or rules that get in the way, employees:	Stick by them or try to avoid them through the proper procedures	4.68	5.77	1.10	Structure
Conflicts are usually solved by:	Discussion aimed at identifying win win solutions	1.97	3.06	1.10	Achievement
One person has legitimate authority over another when:	Using greater competence and knowledge to support the other	2.06	3.13	1.06	Achievement

An example of behaviours, which, if made to come true, will shift the Actual culture, towards the Ideal. From these an action plan is developed to start to change behaviours.

Biggest -VE Difference					
How do we reduce these statements being true?					
Question Group	Question Description	Actual	Ideal	Difference	Parameter
Employees are given tasks or jobs as a result of:	Management requirements and decisions	3.61	2.45	-1.16	Power
One person has legitimate authority over another when:	He/ she is in a senior position	3.97	2.77	-1.19	Power
Faced with procedures or rules that get in the way, employees:	Break them if they think they can get away with it	1.39	0.16	-1.23	Power
Different work groups:	Work on their own unless led to work together by convenience or decree	2.42	1.10	-1.32	Structure
Employees are motivated to do things by:	Senior people using reward and punishment	2.35	0.94	-1.42	Power
Different work groups:	Compete, only helping each other when it is to their advantage	1.74	0.32	-1.42	Power
People are mainly motivated by:	"Carrot and stick" or personal loyalty to manager	2.48	1.00	-1.48	Power
Conflicts are usually solved by:	Interventions by higher authorities	2.87	1.32	-1.55	Power
Successful people in my organisation are those who:	Have good relations with their superiors and are politically astute	3.13	1.35	-1.77	Power
Solutions come about through:	Decisions handed down from above	3.68	1.77	-1.90	Power
To survive in the organisation, a recruit must:	Learn who is important and what behaviours are acceptable	3.19	1.16	-2.03	Power
Employees are treated as:	Human machines to be directed from above	2.74	0.55	-2.19	Power

An example of behaviours, which, if reduced will shift the Actual culture, towards the Ideal. Being aware of these means they can be recognised and discouraged.

In Summary:

Most culture surveys just give a momentary snap shot of the perceived culture of an organisation. Identifying the Ideal culture provides additional benefits:

- ✔ Clear, early identification of significant differences.
- ✔ A rich engaging dialogue to find the best "Ideal" culture is established and owned throughout the organisation.
- ✔ An opportunity for senior leaders to explain and influence other levels as well as listening to diverging opinions.
- ✔ Provides the ideal opportunity to create a process that

✔ engages the maximum number of people in contributing to the necessary changes.

“ LeaderShape has been instrumental in helping me create the right culture, environment and will to win within our newly formed team... aligning behind a single view and creating a culture of trust, self belief and passion. ”
Mark Slater – Commercial Director Dixons Store Group

- References:
- (1) Goleman *et al*, 2002
 - (2) Harrison, 1985
 - (3) Ogbanna and Harris, 2000

Contact Information

Call today or visit our website for more details:
 T: +44 (0)330 323 0275, E: info@leadershapeglobal.com www.leadershapeglobal.com

